

# M-X30/M-X50/M-X70

TECHNICAL DATA SHEET

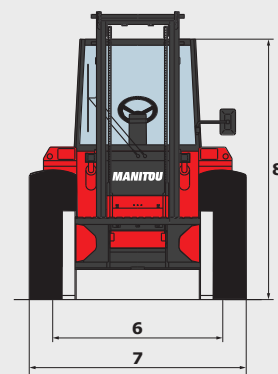
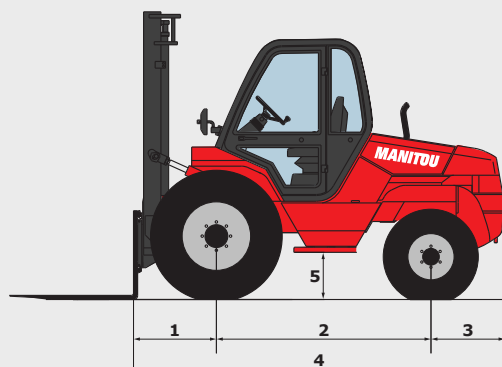


 **MANITOU**

[www.manitou.com](http://www.manitou.com)

# M-X30 M-X50 M-X70

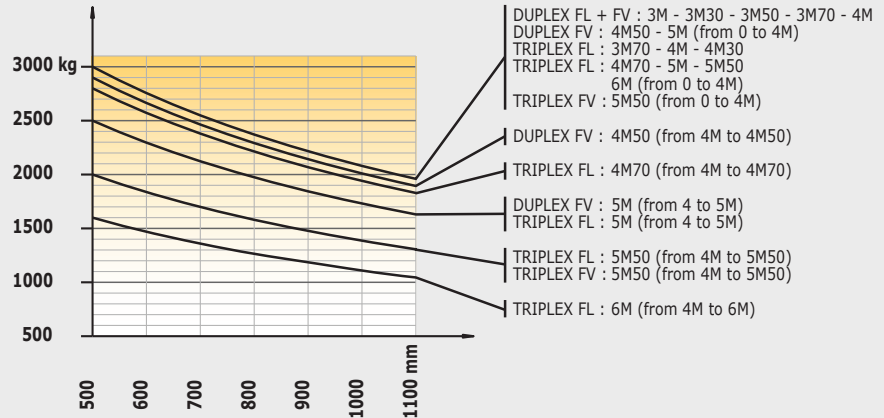
	M-X 30-2	M-X 30-4	M-X 50-2	M-X 50-4	M-X 70-2
<b>Lifting</b>					
Max. capacity	3000 kg at 500 mm CDG		5000 kg at 600 mm CDG		7000 kg at 600 mm CDG
Lifting height (standard mast)	3.70 m		3.70 m		4.00 m
Max. lifting height	6.00 m		6.00 m		4.50 m
<b>Unladen time (standard mast)</b>					
Lifting	0.6 m/s		0.4 m/s		0.4 m/s
Lowering	0.5 m/s		0.4 m/s		0.4 m/s
<b>Tyres</b>					
Forward	14.5 R 20 - MPT80 TL 18 PR 143 G/J	16.5 / 85 - 24 SGI 14PR	18-19.5 A224 18 PR TL	18 - 22.5 MPT 06 16PR TL (445 / 65 R22.5)	18 R 19.5 XF TL (445 / 65 R19.5)
Backward	10R17.5 G291 134M	10.5 / 80 - 18 TG42 TL 10PR	10R17.5 G291 134M	340 / 80 - R18 XMCL TL 143A8	265 / 70 R19.5 HTR1
<b>Braking</b>					
Service brake	oil immersed multi-disc braking on the front axle				
Parking brake	oil immersed multi-disc mechanics on the front axle				
<b>Engine</b>					
Type	PERKINS 1104 D - 44 T - STAGE 3A				
Cubic capacity	4 cyl. - 4400 cm <sup>3</sup>				
Power	95 HP / 70 kW				
Max. torque	392 Nm at 1400 rpm				
Injection	direct				
Cooling	water				
Laden drawbar pull	4250 daN	5870 daN	6230 daN	10360 daN	7960 daN
<b>Transmission</b>					
Gearbox	mechanical				Powershift
Reversing shift	electro-hydraulic				
Number of gears (forward/reverse)	4/4				4/3
Max. travel speed (may vary according to applicable regulations)	24 km/h	27 km/h	22 km/h	24 km/h	
Front axle differential lock	yes	no	yes	no	yes
Control for 2/4 wheel drive	no	yes	no	yes	no
<b>Controls</b>					
	hydro-proportional levers for all movements				
<b>Hydraulics</b>					
	85 l/min - 185 bar		85 l/min - 210 bar		85 l/min - 230 bar
<b>Capacities</b>					
Hydraulic oil	64 l				108 l
Fuel	85 l				115 l
<b>Unladen weight (with standard mast and forks)</b>					
	5430 kg	5620 kg	7470 kg	7660 kg	9810 kg
<b>Dimensions</b>					
1. Front wheel centre to carriage	0.81 m	0.81 m	0.76 m	0.76 m	0.80 m
2. Wheelbase	2.10 m	2.10 m	2.12 m	2.12 m	2.49 m
3. Rear wheel centre to rear face	0.74 m	0.74 m	0.86 m	0.86 m	0.86 m
4. Overall length to carriage	3.63 m	3.63 m	3.75 m	3.75 m	4.16 m
5. Ground clearance	0,38 m	0.40 m	0,36 m	0.38 m	0.39 m
6. Inside tyre width	1.67 m	1.67 m	1.62 m	1.62 m	1.70 m
7. Overall width	2.10 m	2.10 m	2.10 m	2.10 m	2.15 m
8. Overall height	2,46 m	2,54 m	2,42 m	2,50 m	2,44 m
Standard forks (length x width x thickness)	1200 x 125 x 40 mm	1200 x 125 x 40 mm	1200 x 150 x 60 mm	1200 x 150 x 60 mm	1200 x 150 x 70 mm
Turning radius	4.10 m	4.10 m	4.16 m	4.16 m	4.21 m
Tilt standard mast (forward/backward)	6° / 12°		6° / 12°		15° / 15°
<b>Noise and vibration</b>					
Noise at driving position (LpA)	72 dB		76 dB		
Environmental noise (LwA)	104 dB		103 dB		
Vibration to whole hand/arm	<2.5 m/s <sup>2</sup>				



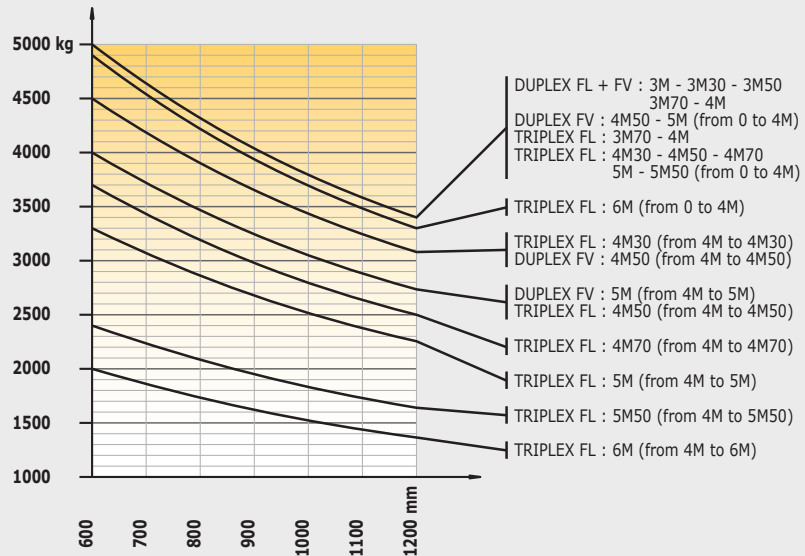
# M-X30 M-X50 M-X70

## Charts without sideshift attachment

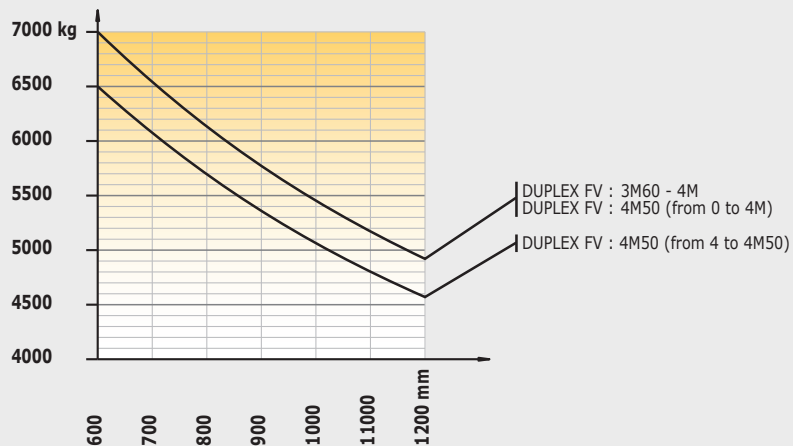
### M-X 30



### M-X 50



### M-X 70



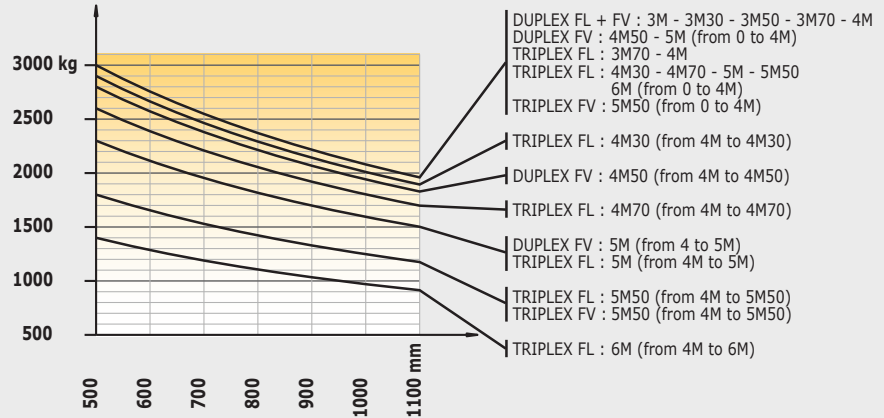
FV = Full Visibility  
FL = Free Lift

This brochure describes versions and configuration options for Manitou products which may be fitted with different equipment. The equipment described in this brochure may be standard, optional or not available depending on version. Manitou reserves the right to change the specifications shown and described at any time and without prior warning. The manufacturer is not liable for the specifications given. For more information, contact your Manitou dealer. Non-contractual document. Product descriptions may differ from actual products. List of specifications is not comprehensive. The logos and visual identity of the company are the property of Manitou and may not be used without authorisation. All rights reserved. The photos and diagrams contained in this brochure are provided for information only.

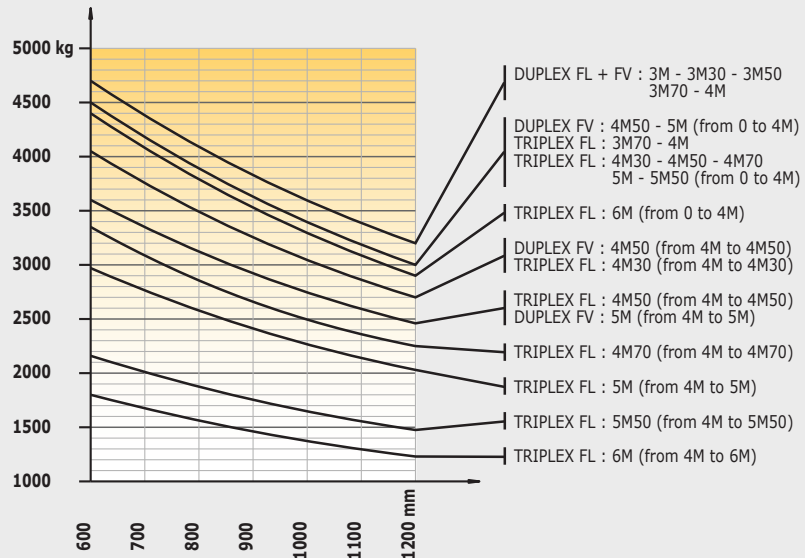


## Charts with sideshift attachment

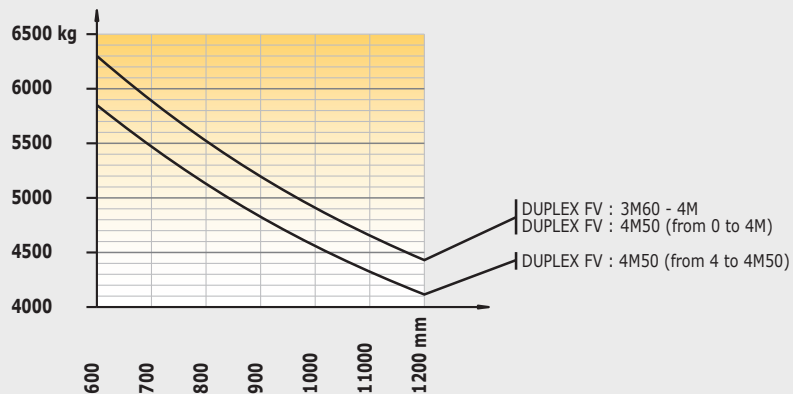
### M-X 30



### M-X 50



### M-X 70



FV = Full Visibility  
FL = Free Lift